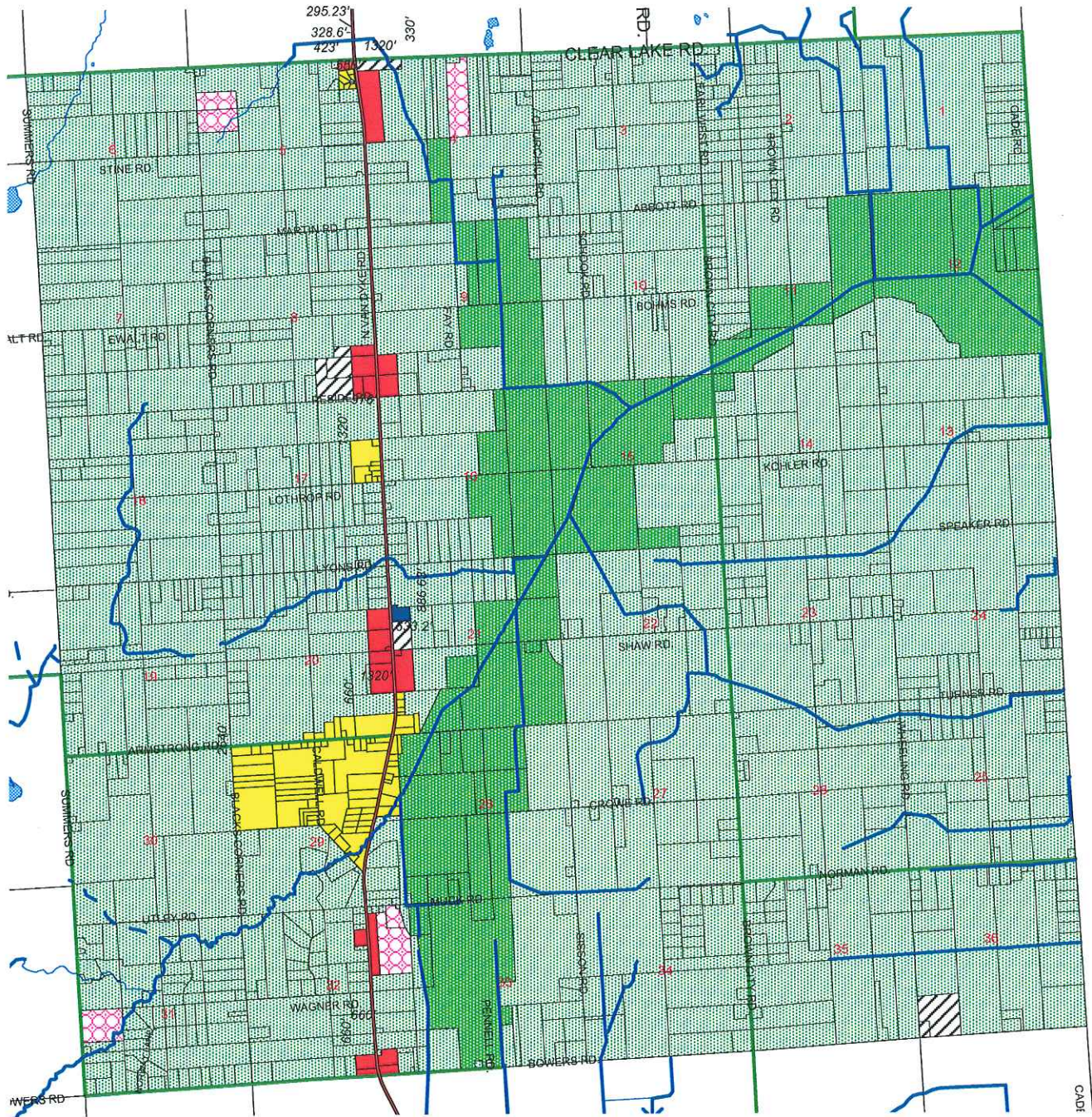


GOODLAND TOWNSHIP MASTER PLAN

Current as of 02-17-2011



-  Agricultural-Residential (A)
-  Agricultural Unique (A-1)
-  Commercial (C)
-  Mineral Extract (EX)
-  Industrial (I)
-  Municipal (M)
-  Residential (R-1)

NORTH
1"=5000'

PRODUCED (01-11) BY:
LAPEER CO EQ/GIS/TREAS
255 CLAY ST #303, LAPEER MI 48446
810-667-0228 or 810-667-0239